



# JeuDerm

Advanced Medical Skincare



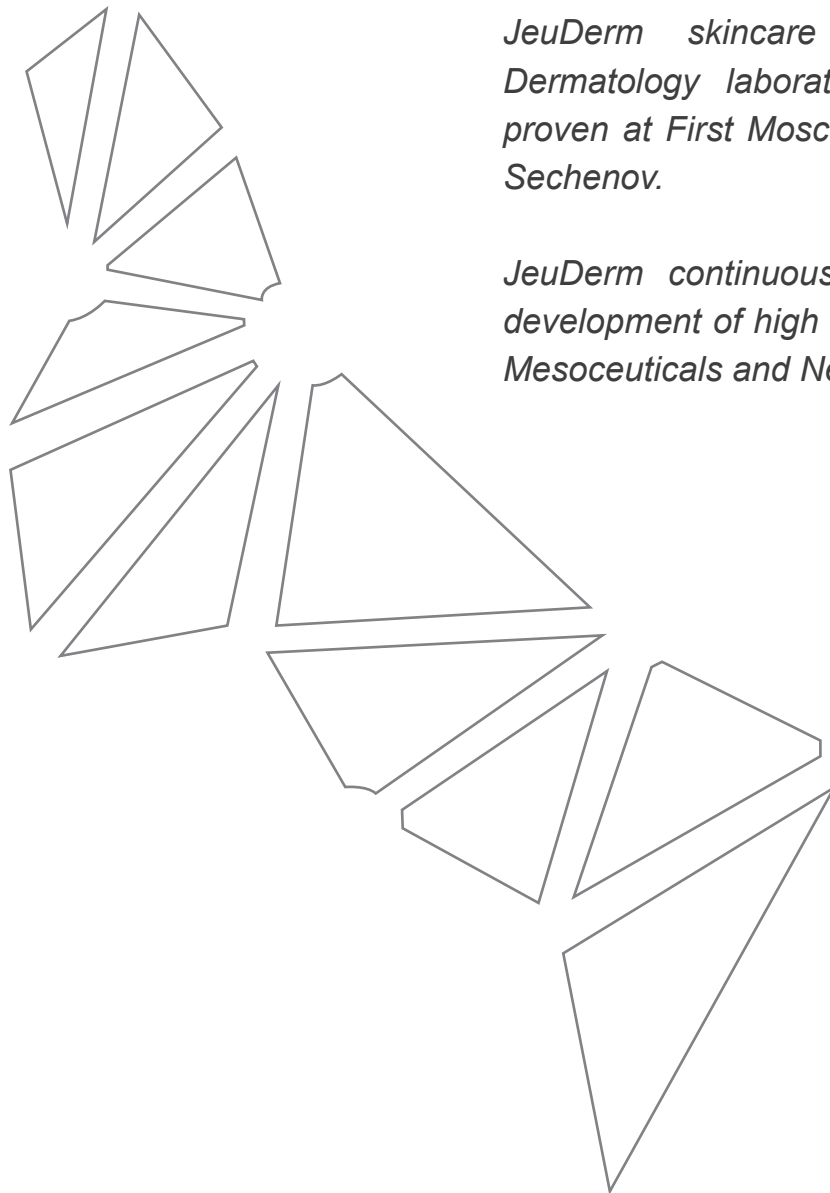
*JeuDerm - Advanced Medical Skincare based on new bio technologies from cosmetic world from South Korea. It developed by group of scientists of biochemistry, cosmetologists and dermatologists as one Development team.*

*JeuDerm means from French YOUNG SKIN (Jeunesse- Young, Derm -Skin).*

*The main advantage of JeuDerm skincare is containing a high concentration of unique patented peptides, a various active ingredients, hyaluronic acid and many herb extracts for effective procedures.*

*JeuDerm provides a complete skincare procedure program.*

*Each product has maximum concentration of active ingredients, which have undergone clinical research, development and testing in a scientific and experimental laboratory for elimination of various problems of the epidermis: wrinkles, acne, pigmentation, redness, inflammation, hair loss and other.*



*JeuDerm skincare effectiveness proven by Dermatology laboratory in Korea and clinically proven at First Moscow Medical University named Sechenov.*

*JeuDerm continuously puts a lot of effort into development of high bio tech products in Skincare, Mesoceuticals and Nutraceuticals world.*

**JeuDerm**

# REFORM AGE

## Anti-aging peptide therapy

The REFORM AGE line consists in advanced cosmetic anti-aging products with a high concentration of anti-aging peptides. Bioactive stimulant and neuro-peptides used in formulations are a fantastically productive new arsenal in the fight against aging and are immensely popular due to their good penetrating power, versatility and powerful antioxidant effect. Skincare products based on them play an important role in anti-aging facial skin care, significantly prolonging its health and youth.



### ACTIVE INGREDIENTS:

SYN®-AKE (Dipeptide Diaminobutyroyl Benzylamide Diacetate), Matrixyl (Palmitoyl Pentapeptide-4), Argireline (Acetyl Hexapeptide-8), Oligo-AWP (Oligopeptide-32) anti wrinkle peptide, Oligo-CBP (Oligopeptide-29) collagen boosting peptide, Cellular Activator - (Glycine, Glutamine, Isoleucine, Leucine, Methionine, Phenylalanine, Serine, Threonine, Tryptophan, Valine, Folic acid, Niacinamide, Riboflavin, Thiamine Hydrochloride, Inositol, Calcium Chloride, Magnesium Sulfate, Potassium Chloride, Sodium Chloride), Snail Secretion Filtrate, Horse Fat, PDRN(Sodium DNA), Pheohydrane, Botanical Plus 10, Dermaflux.

# ANTI-AGING THERAPY WITH PEPTIDES



## REFORM AGE MILD CLEANSER

Reform age gentle cleansing foam with prebiotics and peptides effectively removes impurities, makeup and sebum. Does not disturb the pH balance of the skin.

**Peptide concentration:** 50ppm / Capacity: 150ml

**Active Ingredients :** Glycerin, Myristic Acid, Stearic Acid, Lauric Acid, Allantoin, Panthenol, Tocopheryl Acetate, Centella Asiatica Extract, Capric Acid, Bifidobacteria Enzyme Lysate, Lactococcus Enzyme Lysate, Beta-Glucan, Fructooligosaccharides, Hydrolyzed Pea Protein, Squalane, Ceramide NP, Madecassoside, Madecassic Acid acid, asiaticoside, asicic acid, acetylhexapeptide-8, sh-oligopeptide-1, sh-oligopeptide-2, sh-polypeptide-1, sh-Polypep- tide-22.



## REFORM AGE COLLAGEN TONIC

Rejuvenating collagen tonic with the patented hyaluronic acid formula MOIST-HA5 enriches the epidermis with low molecular weight nutrients, tones, restores moisture balance, and eliminates skin dullness.

Restores the pH balance and the hydrolipidic layer of the skin.

**Peptide concentration:** 250ppm / Capacity: 250ml / 150ml

**Active ingredients:** MOIST HA5: Sodium hyaluronate, Hyaluronic acid Hydroxypropyltrimonium Hyaluronate



## REFORM AGE O2 BOTO FLUID

Unique oxygenated fluid with an innovative texture has a rejuvenating and boto-like effect. Recommended to reduce mimic, fine and deep wrinkles, to revitalize tired stressed skin. The fluid is a radical triple action anti-aging product, provides oxygen energy, reduces horizontal mimic wrinkles, significantly reduces the depth of vertical wrinkles.

The skin looks smoothed and tightened.

**Peptide concentration:** 550ppm / Capacity: 110ml / 50ml

**Active ingredients:** Niacinamide, adenosine, arginine, palmitoyl pentapeptide-4, copper tripeptide-1, acetyl hexapeptide-8, sodium hyaluronate, glycerin.

## REFORM AGE INTENSIVE CREAM

Intensive cream stimulates collagen production. Makes skin looking smoother and more toned. Using this cream, day after day, the contours become more defined, with a lifting effect. The intensive anti-aging cream stimulates collagen production. Wrinkles are reduced. The delicate texture of the cream gives sensual pleasure and noticeable transformation: instantly soft and hydrated.

**Peptide concentration:** 900ppm / Capacity: 50ml

**Active ingredients:** Snail secretion filtrate, Snail secretion filtrate, Horse fat, Urea, Yeast amino acids, Trehalose, Taurine, Betaine, Rosa Centifolia flower water, Allantoin, Adenosine, Shea butter, Shell oil Bitter Orange, Lavender Oil, Anthemis Nobilis Flower Oil, Lemon Peel Oil, Rosemary Leaf Oil, Extract lavender, Rosemary Extract, Origanum vulgare Leaf Extract, Thyme Extract, Glycine, Glutamine, Isoleucine, Leucine, Methionine, Phenylalanine, Serine, Threonine, Tryptophan, Valine, Folic Acid, Riboflavin, Thiamine Hydrochloride, Calcium Chloride, Magnesium sulfate, Potassium chloride, Sodium chloride, Sodium pyruvate, Oligopeptide-29, Oligopeptide-32, Inositol, Niacinamide, Tocopherol acetate.



## REFORM AGE DNA CREAM

Powerful cream-reparant with Sodium DNA - the "molecule of life". Stimulates the synthesis of collagen and glycosaminoglycans, therefore it thickens the structure of the dermis. Possesses strong moisturizing properties, protects the skin from UV.

Neuropeptides fight against mimic wrinkles, collagen stimulating peptides neutralize static wrinkles. The cream maintains an optimal water balance and protects against transepidermal water loss, restoring the epidermal barrier.

**Peptide concentration:** 550ppm / Sodium DNA: 100ppm / Capacity: 110ml / 50ml

**Active Ingredients:** Sodium DNA, Pyrus Malus (Apple) Fruit Extract, Prunus Salicina Fruit Extract, Prunus Persica (Peach) Fruit Extract, Diospyros Kaki Fruit Extract, Argireline (Acetylhexapeptide-8), Syn® -Ake (diaminobutyroyl dipeptide benzylamide diacetate), copper tripeptide-1, Matrixyl (palmitoyl pentapeptide-4), shea butter, macadamia oil.



## REFORM AGE INTENSIVE EYE CREAM

Rejuvenating Intensive Eye cream has a powerful anti-aging effect.

The rich composition of active ingredients, consisting of peptides and patented complexes, helps to eliminate signs of age-related changes, moisturize the skin around eyes. The cream helps to smooth out the skin's relief, restore the hydrolipid barrier, and improve skin tone. The texture of the cream is gentle and absorbs quickly (can be used as a base for makeup). It moisturizes well throughout the day and night time.

**Peptide concentration:** 900ppm / Capacity: 30ml

**Active ingredients:** snail secretion filtrate, snail secretion filtrate, horse fat, urea, yeast amino acids, trehalose, taurine, betaine, Rosa Centifolia flower water, allantoin, adenosine, shea butter, shell oil bitter orange, lavender oil, Anthemis Nobilis flower oil, lemon peel oil, rosemary leaf oil, lavender extract, rosemary extract, rosemary extract Origanum Vulgare leaf, thyme extract, glycine, glutamine, isoleucine, leucine, methionine, phenylalanine, serine, threonine, tryptophan, valine, folic acid, riboflavin, thiamine hydrochloride, calcium chloride, magnesium sulfate, potassium chloride, sodium chloride, sodium pyruvate, oligopeptide-29, oligopeptide-32, inositol, niacinamide, tocopherol acetate.





## MICRO TOUCH MASK

Anti-aging mask that activates regeneration and cellular metabolism, providing complete care that nourishes, deeply hydrates, illuminates and protects against free radicals. Its advanced formula reduces signs of aging for visibly younger, healthier skin.

**Peptide concentration:** 800 ppm / Capacity: 250 ml

**Active ingredients:** Copper Tripeptide-1, sh-Oligopeptide-1, sh-Polypeptide-7, sh-Polypeptide-1, sh-Polypeptide-11, sh-Polypeptide-22, Micro-needles (spicules), Pearl Extract, Extract Japanese Seaweed, Purslane Leaf Extract, Australian Gleditsia Fruit Extract, Polygonum Root Extract japonicum, Prunella vulgaris Leaf Extract, Cnidium Fruit Extract, Rice Extract, Soybean Extract (Soy Isoflavones), Sesame Extract, Sodium Hyaluronate, Glycine, Arbutin, Lecithin, Sodium Ascorbyl Phosphate, Niacinamide.

# LIFT INTENSE

## 100% NANOEMULSION COSMECEUTICALS

The active ingredients form epitaxial liquid crystals and complement the functions of stratum corneum lipids and natural moisturizing factors (NMFs) necessary to obtain and maintain optimal skin activity. The innovative method of O-point nanoemulsification at a pressure of 1 atm., allows you to obtain 100% true nanoemulsion creams with an average droplet diameter of 50 nm or less.



### **LIFTDERM 2000 (Biotinoyl Hexapeptide-2 Amide)**

Main anti-aging ingredient. The hybrid bio-peptide effectively improves dermoepidermal bonding, reduces fine wrinkles by stimulating collagen production in fibroblast cells, production of collagen XVII, laminin-5,  $\alpha 6$  integrin in keratinocytes, adipogenesis in preadipocytes.

## LIFT INTENSE CREAM FORTE



The innovative long-acting lifting cream with high activity of nano-sized components. Regular use of the cream restores the elasticity and density of the skin from the inside, reconstructs the dermis, and enhances the synthesis of collagen and elastin.

Rich texture nanocream for a radical correction of the aging skin of the face and neck. It has a revitalizing and lifting effect. The balanced formula of active ingredients improves metabolic processes in the skin, improves tone and immune status, smoothes fine lines. Provides a stable and long-lasting effect.

**Peptide concentration:** 900ppm / Capacity: 50ml

**Active ingredients:** Squalane, Ceramide NP, Aloe Vera Barbadosensis Leaf Extract, Hippophae Rhamnoides Extract, Angelica Acutiloba Root Extract, Morus Alba Bark Extract, Coptis Japonica Root Extract, Houttuynia Cordata Extract, Extract Centella Asiatica, Witch Hazel Leaf Extract, Root Extract Licorice, Ginseng Root Extract, Honeysuckle Flower Extract, LIFTDERM 2000, Adenosine, Shea Butter, Meadow Seed Oil, Evening Primrose Oil, Hyaluronic Acid, Allantoin, Tocopherol Acetate (Vitamin E), Niacinamide (Vitamin B3), Panthenol (Vitamin B5), PPG-20 tocopherol-50.



## LIFT INTENSE UP-ESSENCE

The active lifting Up-essence provides a deep lifting effect and tightens the skin. Improves skin tone, firmness and skin texture. Significantly enhances the lifting result in combination with the cream of LIFT INTENSE line.

**Peptide concentration:** 900ppm / Capacity: 30ml

**Active ingredients:** Beta-Glucan, Serine, Glycine, Glutamic Acid, Alanine, Lysine, Arginine, Threonine, Hydrolyzed Soy Protein, Proline, Sodium DNA, Copper Tripeptide-1, Palmitoyl Oligopeptide, Trehalose, Betaine, Sodium PCA, Beta-glucan.

## LIFT INTENSE FD-FIBER

### FREEZE-DRIED BIO FILLER

Freeze-dried technology is a type of drying obtained by sublimation in which a substance is frozen and the partial pressure of water vapor is lowered to directly turn ice into vapor.

A decrease in partial pressure here means a decrease in pressure below the triple point of water (6 mbar or 4.6 Torr).

At low pressure, water in the form of ice supplies heat energy and sublimates directly into water vapor rather than liquefies. As the freeze-dried ice crystals leave the space, the dried material has countless gaps, so it easily absorbs moisture and completely re-dissolves when rehydrated. This is one of the most important characteristics of freeze drying (lyophilization process). Freeze-dried technology allows active ingredients to be fixed in their best and most active form without the need to add additional preservatives or stabilizers that could affect on the quality and overall effectiveness of products.



## LIFT INTENSE FD-FIBER

Special bio Freeze-Dried Fiber with peptides, collagen and hyaluronic acid for skin rejuvenation. The technology of perfect fusion of bio FD-FIBER with nanotechnology and freeze-dried technology promotes deep penetration and activation of fibroblasts and the synthesis of collagen and elastin. As a result, the structure of the dermal matrix is restored, wrinkles are effectively reduced and the quality of the skin is improved.

**Peptide concentration:** 900ppm / 25mg\*10ea

**Active ingredients:** Beta-Glucan, Hexapeptide-61 Dimer, Biotinoyl Hexapeptide-2 Amide, Acetyl Hexapeptide-8, Dipeptide Diaminobutyryl Benzylamide Diacetate, Hydrolyzed Collagen, Sodium Hyaluronate, Silk Protein, Milk Protein, Low molecular weight Chitosan.



## LIFT INTENSE FIBER ACTIVATOR

Lift Intense Fiber Activator is designed especially to dissolve the FD-Fibers. It easily activates the dissolution process of FD Fibers and helps penetrate the active ingredients. Provides lifting and botox effect.

**Peptide concentration:** 200ppm / Capacity: 50ml

**Active ingredients:** Chondrus Crispus Powder, Copper Tripeptide-1, Acetyl Hexapeptide-8, Glycerin, Adenosine, Tamarindus Indica Seed Gum( = Green HA).

## LIFT INTENSE VISO CONTOUR Syn-Ake

LIFT INTENSE VISO CONTOUR mask is an instant lifting effect with face oval modeling. This is a unique complex effect of enzymes, peptides and acids on the skin of the face, neck and décolleté, which allows you to achieve deep cleansing, moisturizing and skin renewal, as well as a pronounced lifting effect in the shortest possible time.

**Peptide concentration:** 1000ppm/ Capacity: 110 ml.



**Active ingredients:** Dipeptide Diaminobutyryl Benzylamide Diacetate (SYN-AKE), Acetyl Hexapeptide-8, Copper Tripeptide-1, sh-Pentapeptide-19, sh-Octapeptide-4, sh-Oligopeptide-9, sh-Decapeptide-7, rh-Oligopeptide -1, Pulsatilla Koreana Extract, Zanthoxylum Piperitum Fruit Extract, Usnea Barbata Extract, Glycyrrhiza Glabra Root Extract, Cimicifuga Racemosa Root Extract, Sophora Flavescens Root Extract, Angelica Gigas Root Extract, Sesamum Indicum Seed Extract, Paeonia Lactiflora Extract, Scutellaria Baicalensis Root Extract, Morus Alba Bark Extract, Phellinus Linteus Extract, Polygonum Multiflorum Root Extract, Fucus Vesiculosus Extract, Prunella Vulgaris Extract, Bifida Ferment Lysate, Lactococcus Ferment Lysate, Lactobacillus Ferment Lysate, Beta-Glucan, Sodium Hyaluronate, Panthenol, Allantoin, Glycerin, Fructooligosaccharides, Glycolic Acid.



## LIFT UP

LIFT UP is a powder cosmetic treatment that combines hydrolyzed collagen, hyaluronic acid and elastin. Its advanced formula provides a complete facial lifting when applied using the nano-puncture technique, dissolving the mixture with products based on hyaluronic acid. The results are visible from the first session, offering an immediate effect of facial lifting and firming. Ideal for those looking for firmer, toned and rejuvenated-looking skin.

**Capacity:** 1x5g

**Active ingredients:** Hydrolyzed collagen, Hyaluronic acid, Elastin powder.

## GHOST MASK

Ghost Mask is an innovative mask that combines a veil of cross-linked hyaluronic acid and collagen peptide, using advanced fiber yarn technology. The mask dissolves and penetrates the skin when activated by our exclusive "Collagen Tonic", offering deep hydration and a powerful lifting effect. Its exclusive formula provides visible results from the first application, achieving firmer, toned and rejuvenated. Ideal for use in the final or prefinal phase of exclusive treatments in beauty salons.

**Active ingredients:** Cross-linked Hyaluronic Acid, Collagen Peptide, Collagen Tonic, Hexapeptide-8 Extract, Sodium B-Glucan, Silk.



## MODELING LIFT INTENSE MASK

Alginate mask with plaster for instant modeling.

The modeling plaster mask improves the effectiveness of cosmetic products applied to the skin before using the mask. Before applying the mask, you can use a variety of essences, serums, creamy masks and gels. The plaster mask, forming a film impermeable to air and water, exerts light pressure on the skin, helping the active components of cosmetic products to penetrate deeper into the skin. Recommended for all skin types.

**Active ingredients:** Alginate, Gypsum

# ALA FACTOR

## CELLULAR RESTORATION OF THE SKIN

The ALA FACTOR complex is a holistic approach to the creation of the main aspect of beauty: brightness, lifting and even skin tone.

The ALA FACTOR includes a professional PDT procedure with a special thermodynamic photo-sensitizer gel with 2% 5-ALA acid and homecare products with 5-ALA combined with peptides, which provide a prolonged effect after the procedure and healthy skin, so that further aesthetic manipulations will keep your natural skin beauty.

A collaboration of biochemists, pharmacists, dermatologists, cosmetologists has created an effective complex of effects on the skin with an unique component - stabilized 5-amino-levulinic acid (5-ALA) in combination with peptides.

The "Source of Life" 5-ALA is a naturally occurring amino acid produced in the mitochondria (the energy of cells) and is the raw material for proteins involved in the energy production.



Photodynamic therapy is widely used in the practice of cosmetologists and dermatologists, as it has proven to be effective not only in the treatment of skin diseases, but also in skin rejuvenation and improvement. The photodynamic therapy method with the application of the ALA FACTOR photosensitizer attracts the attention of many specialists due to its safety, effectiveness, absence of pain and lack of serious side effects.

With PDT, the selective elimination of damaged structures of the epidermis and dermis occurs, and the normalization of metabolism in cells, their proliferation, optimization of melanogenesis and angiogenesis through a photochemical reaction activated by light energy. This reaction requires the presence of a photosensitive substance (photosensitizer) in the target tissue and the presence of a light source with a wavelength that corresponds to the absorption maximum of this substance. This reaction results in the formation of singlet oxygen (O<sub>2</sub>).

# CELLULAR RESTORATION OF THE SKIN



## ALA FACTOR

Photosensitizer serum for PDT.

ALA FACTOR is a powerful serum that provides molecular-cell rejuvenation of aging skin, improves skin with acne and increased skin defenses.

Stabilized 2% 5-aminolevulinic acid, the main active ingredient in ALA FACTOR thermo-active gel, is an inducer of endogenous protoporphyrin IX synthesis. Excitation of protoporphyrin IX leads to the subsequent production of reactive (singlet) oxygen, which has the following therapeutic effects: stimulation of your own antioxidant system; acceleration of metabolic reactions and regeneration processes; elimination of inflammatory processes; increasing breathing efficiency, eliminating hypoxia.

**5-ALA concentration:** 2%

**Peptides concentration:** 250ppm / Capacity: 25 ml.

Ingredientes activos: Aminolevulinic Acid HCl, Oligopeptide-10, Sodium Hyaluronate, Asiaticoside, Asiatic acid, Madecassic acid, Salicylic Acid, Niacinamide, Propolis Extract, Betula Alba Juice, Pinus Densiflora Leaf Extract, Rosa Centifolia Flower Water, Camellia Sinensis Leaf Extract, Aspalathus Linearis Extract, Oryza Sativa (Rice) Bran Extract, Boswellia Serrata Extract, Honey Extract. Ácido Madecásico, Asiaticoside, Ácido Asiático, Acetilhexapéptido-8, sh-oligopéptido-1, sh-oligopéptido-2, sh-polipéptido-1, sh-Polipéptido-22.

## PHOTO FACTOR 100% HYDROGEL MASK

A special hydrogel mask for moisturizing and regenerating the skin. The light-sensitive processing characteristics of 100% hydrogel enhance the effect of PDT. Biostimulating therapy is based on a combination of phototherapy and photoporation, which promotes the absorption of the active components of the special PHOTO FACTOR Hydrogel Mask. Photoporation technology is based on the fact that nano-encapsulated peptides have a better coefficient of penetration through the skin when exposed to light. The hydrogel mask is effective even without rays of light. The excellent stability and permeability of the peptides demonstrates a beneficial anti-aging effect.

**Peptide concentration:** 550ppm / Capacity: 25g

**Active ingredients:** Beta-Glucan, Tripeptide-1, Copper Tripeptide-1, Acetyl Tetrapeptide-5, Acetyl Tetrapeptide-2, Palmitoyl Pentapeptide-4, Palmitoyl Tripeptide-1, Hexapeptide-9, Hexapeptide-11, Palmitoyl Tripeptide, Glycerin, Niacinamide, Betaine, Chondrus Crispus Extract, Paeonia Suffruticosa Root Extract, Centella Asiatica Extract, Chamomilla Recutita (Matricaria) Flower Extract, Glycine, Alanine, Sodium Hyaluronate, Bifida Ferment Lysate, Serine, Valine, Threonine, Proline, Isoleucine, Histidine.



# ALA FACTOR ENERGO TONER

Energo Toner with 5-ALA acid optimizes cell functions, increases the adaptive resource of cells, resulting in a significant improvement in the appearance of the skin.

**Peptide concentration:** 300ppm / 5-ALA: 0.01% / Capacity: 100ml

**Active ingredients:** Oligopeptide-32, Allantoin, Aminolevulinic Acid HCl, Ascorbic Acid, Adenosine, Arginine, Aloe Barbadensis Leaf Juice, Glycerin, Rosa Centifolia Flower Water, Tremella Fuciformis (Mushroom) Extract, Corthellus Shiitake (Mushroom) Extract, Urea, Yeast Amino Acids, Trehalose, Chlorella Minutissima Extract, Sea Water, Sodium Hyaluronate.



# ALA FACTOR ENERGO EMULSION

Multifunctional emulsion with high biochemical activity to stimulate cell energy. 5-ALA and peptides optimize cell function, increase the adaptive resource of cells, resulting in a significantly improved appearance of the skin.

**Peptide concentration:** 700ppm / 5-ALA: 0.1% / Capacity: 100ml

**Active ingredients:** Oligopeptide-32, Aminolevulinic Acid HCl, Ascorbic Acid, Adenosine, Glycerin, Butyrospermum Parkii (Shea) Butter, Simmondsia Chinensis (Jojoba) Seed Oil, Urea, Yeast Amino Acids, Trehalose, Algin, Chlorella Minutissima Extract, Niacinamide, Sodium Hyaluronate, Aloe Barbadensis Leaf Juice, Cinnamomum Cassia Bark Extract, Chrysanthellum Indicum Extract, Camellia Sinensis Leaf Extract, Artemisia Princeps Leaf Extract.



# ALA FACTOR ENERGO CREAM

Multifunctional cream with high biochemical activity stimulates cell energy. 5-ALA and peptides optimize cell function, increase the adaptive resource of cells, significantly improving the appearance of the skin. Provides long-lasting effect after PDT.

**Peptide concentration:** 900ppm / 5-ALA: 0.1% / Capacity: 50ml

**Active ingredients:** Oligopeptide-32, Aminolevulinic Acid HCl, Ascorbic Acid, Adenosine, Glycerin, Simmondsia Chinensis (Jojoba) Seed Oil, Butyrospermum Parkii (Shea) Butter, Sodium Hyaluronate, Urea, Yeast Amino Acids, Trehalose, Algin, Chlorella Minutissima Extract, Cinnamomum Cassia Bark Extract, Chrysanthellum Indicum Extract, Camellia Sinensis Leaf Extract.





## ALA FACTOR Energo Mist

Refreshing mist that deeply hydrates the skin, relieving tightness and replenishing moisture instantly. Provides effective antioxidant protection against screen emissions and environmental stress, while combating fatigue and dull skin tone. Perfect for refreshing or setting makeup, leaving it fresh and matte.

**Peptide concentration:** 250 ppm / Capacity: 150 ml

**Active ingredients:** Stromal Cell Conditioned Media Extract, Copper Tripeptide-1, sh-Polypeptide-22, sh-Polypeptide-1, sh-Oligopeptide-2, sh-Oligopeptide-1, Sodium Hyaluronate, Sodium Hyaluronate Crosspolymer, Hydroxypropyltrimonium Hyaluronate, Hyaluronic Acid, Hydrolyzed Hyaluronic Acid, Centella Asiatica Extract, Root Extract Scutellaria Baicalensis, Polygonum Cuspidatum Root Extract, Edelweiss Flower/Leaf Extract, Camellia Sinensis Leaf Extract, Licorice Root Extract, Rosemary Leaf Extract, Chamomile Flower Extract, Hydrolyzed Collagen, Niacinamide.

# ALA VITA C

ALA VITA C is an exclusive and patented antioxidant serum, designed to redefine the standards of the cosmetic industry. This unique combination of two powerful antioxidants, 5-aminolevulinic acid (5 ALA) and stabilized freeze-dried vitamin C, offers exceptional results in facial rejuvenation.



## ALA VITA C

With 20% stabilized freeze-dried vitamin C and stabilized 5-aminolevulinic acid, ALA VITA C provides a strong brightening effect, blurs stubborn spots, combats premature aging and visibly reduces wrinkles. Ideal for microneedling treatments, it will rejuvenate the skin from the first session, offering a younger, fresher and more radiant appearance.

**Peptide concentration:** 550 ppm / Capacity: 5g

**Active ingredients:** Ascorbic Acid (Vitamin C) (20%), 5-Aminolevulinic Acid, Glycerin, Allantoin, Glechoma Hederacea Extract, Sodium Acetylated Hyaluronate, Hydrolyzed Hyaluronic Acid, Hydroxypropyltrimonium Hyaluronate, Raspberry Ketone.

# MY ATO

## PEPTIDE THERAPY FOR ATOPIC & SENSITIVE SKIN

MY ATO is the medical skincare line with a therapeutic and preventive effect, designed for the treatment and care of extremely dry, rough, cracked, sensitive skin, as well as for atopic dermatitis, seborrheic dermatitis, psoriasis, rosacea. Unlike hormonal drugs for atopic dermatitis, which are highly effective, but give a number of undesirable side effects, MYATO products are non-hormonal (do not contain glucocorticoids) non-drug products containing only natural ingredients with a long-term therapeutic effect.

MY ATO skincare line have passed clinical trials at the Medical Center of the Department of Skin Diseases of the First Moscow State Medical University named by Sechenov under the guidance of Ph.D, MD. Olisova Olga, as a result of which they showed high clinical efficacy in external mono therapy of damaged skin in mild to moderate atopic dermatitis.

**MYATO**  
GENTLE CARE FOR ATOPIC,  
SENSITIVE AND VERY DRY SKIN

**PEPTIDE COMPLEX 900 ppm**  
Triple M Complex™  
Copper Tripeptide-1,  
Serilesine

**HERB COMPLEX**  
Coptis Japonica Root Extract  
Dictamnus Dasycarpus Root Extract  
Houttuynia Cordata Powder  
Scutellaria Baicalensis Root Powder

**MYATO MOIST EMULSION**  
DERMATOLOGICAL TESTED  
EXPERT  
100 ml

**MYATO INTENSIVE CREAM**  
EXPERT  
50 ml

**PROBIOTICS:** Bifida Ferment Lysat  
**EPIDERMIS BARRIER:** CERAMIDE NP  
Squalane, Hydrogenated Lecitin.

**DEEP MOISTURIZING**  
Purest β-GLUCAN 93.3%  
Hyaluronic acid

MY ATO skincare line is recommended for use by both adults and children. It is recommended to apply MY ATO emulsion or MY ATO intensive cream on problem areas of the skin 3-4 times a day, and if necessary more often, suitable for both face and body. Approved for use by pregnant women, lactating women, as well as during pregnancy planning.

The presence of atopic dermatitis indicates a tendency to allergic reactions, therefore, before use, the product must first be checked for individual tolerance. Apply to the inner side of the wrist, allow to absorb and observe for 24 hours. If no changes occur during this period (redness, rash, dry skin, itching), then the product is permissible for use.



# PEPTIDE THERAPY FOR ATOPIC AND SENSITIVE SKIN



## MY ATO CLEAN GEL

Cleansing gel for all types of sensitive skin.

A special cleansing gel with a delicate formula for all skin types, including sensitive, incredibly dry skin. It cleanses the skin without feeling an oily film, without disturbing the epidermal barrier.

A special production technology ensures uniform distribution of ingredients in the texture of the soft foam cleanser, while cleansing the skin, moisturizing, leaving it clean and healthy. Hypoallergenic. Non-comedogenic.

**Peptide concentration:** 50 ppm / Capacity: 250 ml

**Active ingredients:** Sweet almond oil, Hydrolyzed wheat protein, Panthenol, Purslane, Centella Asiatica Extract.



## MY ATO TONER MOUSSE

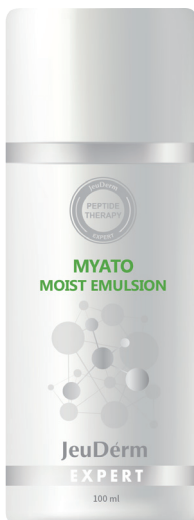
Toner Mousse for all types of sensitive skin.

Gentle toner-mousse with panthenol soothes and moisturizes sensitive skin with rosacea. Vitamins and calming ingredients ensure the normal functioning of blood vessels and the stability of cell membranes. Restores skin pH balance and moisturizes.

A special production technology ensures even distribution of ingredients in the texture, which soothe and moisturize the skin. Hypoallergenic. Non-comedogenic.

**Peptide concentration:** 150 ppm / Capacity: 150 ml

**Active ingredients:** Blackcurrant bud extract, Prunus persica (peach) fruit extract, Pyrus Communis (pear) fruit extract, Vanilla planifolia fruit extract, Musa sapientum (banana) fruit extract, leaf extract Hedera Helix (Ivy) Stem, Rubus Suavissimus (Raspberry), Prunus Amygdalus Amara (Bitter Almond) Leaf Extract Ananas Sativus (pineapple) fruit, copper tripeptide-1, panthenol, allantoin, sodium hyaluronate.



## MY ATO MOIST EMULSION

Moisturizing and soothing emulsion of therapeutic applying, intended for sensitive, extremely dry, rough, cracked and inflamed skin.

Recommended for skin regeneration in case of atopic dermatitis, seborrheic dermatitis, psoriasis, rosacea and diabetes.

Stimulates the process of skin regeneration and restores its protective barrier, soothes, softens and the emulsion has a pleasant texture, is quickly absorbed into the skin, without stickiness.

**Peptide concentration:** 450 ppm / Capacity: 150 ml / 100 ml

**Active Ingredients:** Patented Triple M Peptide Complex™, Copper Tripeptide-1, Beta-glucan, Shea Butter, Hyaluronic Acid, Ceramides, Houltuynia Cordata Extract, Dithamnus Extract, Scutellaria Root Extract, Koptis Root Extract, Anise flower extract.



# MYATO INTENSIVE CREAM

Intensive regenerating cream with a therapeutic and preventive purpose, designed for sensitive, extremely dry, rough, cracked and inflamed skin. Recommended to treat the dry skin with atopic dermatitis, seborrheic dermatitis, psoriasis, rosacea and diabetes. Stimulates the process of skin regeneration and restores its protective barrier, soothes, softens and moisturizes irritated skin. Significantly contributes to the prolongation of remission. The intensive cream has a pleasant texture, absorbs quickly into the skin, is not sticky or greasy.

**Peptide concentration:** 900 ppm / Capacity: 50 ml

**Active Ingredients:** Triple M Complex, Copper Tripeptide -1, Serileisin,  $\beta$ -glucan, Ceramide NP, Shea Butter, Niacinamide, Herbal Complex: Coptis Japonica Root Extract, Dictamnus Dasycaurus Root Extract, Houltuynia Cordata Powder, Scutellaria Baicalensis root extract.

# ACNOCELL

## PEPTIDE ANTI ACNE THERAPY

ACNOCELL - anti acne skincare line and a complex of procedures for the treatment of acne prone skin and for the care of problem skin in the period of remission.

Highly effective therapeutic and preventive ACNOCELL line is the powerful treatment for acne, inflammation and sensitive skin without side effects.

The powerful therapeutic effect is provided by an innovative patented biochemical peptide complex: antimicrobial Acnotide, brightening peptide complex Demelaxyl, Glutathione, moisturizing Triple M Complex and a fast response Copper anti-inflammatory peptide, which are included as the main active ingredients in a high precisely adjusted and specified concentration.



### ACTIVE INGREDIENTS:

- ACNOTIDE is the antimicrobial component, killer-peptide with a patented amino acid structure. These amino acids are also found in the human body, which makes Acnotide related to our skin and makes it an active assistant to the body in the healing process and destruction of pathogenic microbes.
- Demelaxyl and Glutathione - the brightening peptide complex inhibits tyrosinase, blocks melanin synthesis and reduces the likelihood of post-inflammatory pigmentation.
- Triple M Complex is the fast hydration and restoration of damaged skin will be provided by peptide complex, which is the same to NMF and identical to skin components and enhances their performance.
- Copper tripeptide has anti-inflammatory and antioxidant effects.
- $\beta$ -glucan, natural purified, revives the skin's own defenses, and raises them to fight acne. Bifidobacterium lysate will restore normal skin microbiome.

## ACNOCELL MILD CLEANSER



Cleansing Gel for oily, porous, prone to inflammation and acne prone skin with keratolytics and peptides. Effectively removes impurities, makeup and sebum. The formula of the gel contains cleansing and anti-inflammatory herb components, suitable even for oily sensitive skin. Does not disturb pH balance and skin microflora. Increases the effectiveness of cleanser for problem skin on regular base.

**Peptide concentration:** 50 ppm / Capacity: 250 ml

**Active ingredients:** Salicylic acid, Citric acid, Acnotide (Glicin, Alanin, Glutamic acid, Serin, Arginin), Demelaxyl (Nonapeptide-1, Piper Methysticum Root Extract), Wrinkle Free J316 (Hexapeptide-61 dimer), Copper Tripeptide-1, Glutathione, Guizulen,  $\beta$ -glucan, allantoin, Pulsatilla Koreana Extract, Salix Alba (Willow) Bark Extract, Usnea Barbata (Lichen) Extract, Zanthoxylum Piperitum Fruit Extract, Myrtus Communis Extract, Iris Florentina Root Extract.

## ACNOCELL CLAY MASK



A purifying anti-inflammatory Mask with white clay (kaolin), peptides, a multi-plant complex and powerful antiseptics provides deep cleansing of the skin, removes excess sebum.

It has an anti-inflammatory effect and helps to brighten the skin tone, tightens enlarged pores, gives the skin a matte and fresh look.

**Peptide concentration:** 250 ppm / Capacity: 250 ml

**Active ingredients:** Kaolin, sh-Oligopeptide-1, sh-Oligopeptide-2, sh-Polypeptide-1, sh-Polypeptide-22, Copper tripeptide-1, Centella Asiatica Extract, Scutellaria Baicalensis Root Extract, Polygonum Cuspidatum Root Extract, Licorice Root Extract, Camellia Sinensis Leaf Extract, Rosemary Leaf Extract, Chamomilla Recutita Flower Extract, Inonotus Obliquus (Mushroom) Extract, Pumpkin Fruit Extract, Tea Tree Leaf Oil, Aloe Barbadensis Leaf Extract, Althaea Rosea Root Extract, Sodium hyaluronate, Trehalose, Allantoin, Dipotassium glycyrrhizate, Propolis extract, Niacinamide (Vit. B3)

## ACNOCELL TREATMENT GEL



Anti-inflammatory gel for the recovery of problem and inflamed skin with acne. A high concentration of antimicrobial, brightening peptide complex and specially selected herb components have a healing effect on problem skin with signs of acne.

**Peptide concentration:** 330 ppm / Capacity: 150 ml / 100 ml

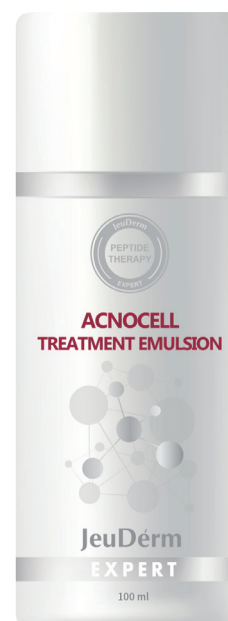
**Active Ingredients:** Bifida Ferment Lysate, Acnotide, Demelaxyl, Wrinkle Free J316, Copper Tripeptide-1, Glutathione, Myrtus Communis Extract, Tropaeolum majus Extract, Usnea Barbata (Lichen) Extract, Zanthoxylum Piperitum Fruit Extract, Aloe Barbadensis Leaf Powder, Pulsatilla Koreana Extract, Hamamelis Virginiana Leaf Extract, Iris Florentina Root Extract, Salix Alba (Willow) Bark Extract, Cimicifuga Dahurica Root Extract, Niacinamide, Sodium Hyaluronate,  $\beta$ -glucan, Adenosine, Allantoin.

## ACNOCELL TREATMENT EMULSION

Anti-inflammatory Emulsion for the daily care of oily, combination and acne prone skin. The light texture with a high concentration of antimicrobial, brightening peptide complex and specially selected herb components has a healing effect on problem skin with signs of acne. Moisturizes skin for 24 hours and provides a matte effect. Not comedogenic.

**Peptide concentration:** 330 ppm / Capacity: 150 ml / 100 ml

**Active Ingredients:** Bifida Ferment Lysate, Acnotide, Demelaxyl, Wrinkle Free J316, Copper Tripeptide-1, Glutathione, Myrtus Communis Extract, Tropaeolum majus Extract, Usnea Barbata (Lichen) Extract, Zanthoxylum Piperitum Fruit Extract, Aloe Barbadensis Leaf Powder, Pulsatilla Koreana Extract, Hamamelis Virginiana Leaf Extract, Iris Florentina Root Extract, Salix Alba (Willow) Bark Extract, Cimicifuga Dahurica Root Extract, Niacinamide, Sodium Hyaluronate,  $\beta$ -glucan, Adenosine, Allantoin.



## ACNOCELL TREATMENT TONER

Concentration of Acnotide™ Peptide, Triple M Complex™ and Copper Tripeptide in the anti-inflammatory therapeutic Acnocell Toner helps in the treatment of rashes, irritation and redness. This is the third step required in the treatment protocol for acne-prone skin. The uniquely developed complex of specially selected peptides and plant extracts, penetrating deeply into the skin, normalizes lipid metabolism, restores blood circulation and regulates natural metabolic processes within the cells themselves, having a powerful and pronounced anti-inflammatory effect. Acceptable for laser procedures.

**Peptide concentration:** 110 ppm / Capacity: 250 ml / 100 ml

**Active ingredients:** Patented Acnotide™, Triple M Complex™, Copper Tripeptide, Hamamelis Virginiana Extract, Iris Florentine Extract, Propolis Extract,  $\beta$ -Glucan, Aloe Vera, White Willow Bark Extract, Zinc Sulfate, Palmitate Retinyl, Panthenol, Cimicifuga Extract, Allantoin, Dipotassium Glycyrrhizinate, Extract of Japanese Pepper, Korean Pulsatilla, Usnea, Sodium Hyaluronate, Adenosine

## ACNOCELL MULTI-ACID PAD

### Multi-Acid Wipes for Peeling at Home

AcnoCell Multi-Acid Wipes deeply exfoliate the skin and remove dead cells. The Special Soothing Complex provides calming and moisturizing effects. This is the second step in the care of treating acne prone skin at home. Increases the effectiveness of subsequent products for acne-prone skin with regular use.

**Peptide concentration:** 200 ppm / Capacity: 100 ml / 50 pads

**Active ingredients:**  
Tranexamic Acid-3%,  
Mandelic Acid - 2%,  
Glycolic Acid - 1.4%,  
Citric Acid- 0.5%,  
Salicylic Acid - 0.2%



# NOVA COMPLEX

## PROFESSIONAL EXFOLIATIONS

### 3 step Peeling System

NOVA COMPLEX is a peeling system of the new generation.

Each solution is an intelligent three-level system of 3 interconnected sequential solutions, each is indispensable and essential in the procedure for chemical renewal and skin revitalization.

Each of the three solutions of the Complex is a combination of specially selected active components that maximize the effect of each other. Complex has a low-concentration acids and a unique combination of anti-aging and prebiotic ingredients.



### ADVANTAGES

- Multitasking - Solving multiple problems in one procedure.
- Non-invasive procedure with high efficiency. Short recovery period.
- Minimal risk of side effects.
- The ability to work with sensitive skin

### INDICATIONS FOR APPLICATION:

- Tired skin with signs of photoaging: correction of deep dehydration, superficial wrinkles and reduced turgor.
- Fading skin: stimulating anti-age therapy due to the normalization of keratinization and cell proliferation, active restructuring of the dermis.
- Superficial hyperpigmentation: normalization of melanogenesis processes after non-deosed UV irradiation, post-inflammatory hyperpigmentation.
- Skin with complications from acne: normalization of fat balance, uneven microrelief, increased resistance to infection.



## AHA PRIMER

Multi-acid solution for starting the NOVA peeling procedure and preparing the skin before exposure to the active solution according to the protocol, to check the reactivity of the skin, in order to level the superficial stratum corneum for a more uniform and effective action of the ACTIVE solution, as well as to reduce the risk of post-peeling complications.

**Active ingredients:** AHA 10%, pH 3,5: Lactic acid, Citric acid, Malic acid, Pyruvic acid, Tartaric acid, Glycolic acid.

**VITAMINS:** Panthenol (Vit. B5), Tocopheryl acetate (Vit. E)

**HERB EXTRACTS AND OILS:** Citrus Bergamot Fruit Oil, Sunflower Seed Oil, Orange Peel Oil, Eucalyptus Globulus Leaf Oil, Spearmint Leaf Oil, Lavandula Hybrida Oil, Anthemis Nobilis Flower Oil, Lemon Peel Oil, Chenopodium Album Flower Extract, Lactuca Indica Extract, Corydalis Ochotensis Extract, Draba Nemorosa Extract, Anise Fruit Extract, Allantoin.



## NOVA ACTIVE

The main active solution in the NOVA complex. Suitable for all types of dense, tolerant skin, during the period of active insolation. It is used according to indications with the obligatory protection of the skin with SPF preparations.

**Active ingredients:** 35% AHA / BHA / PHA solution, pH 1.5 : Lactic acid, Citric acid, Malic acid, Glycolic acid, Pyruvic acid, Tartaric acid, Sodium lactate, Betaine Salicylate, Gluconolactone. **ENZYMES:** Lactobacillus/Soybean Ferment Extract.

**HERB EXTRACTS:** Aloe Barbadensis Leaf Extract, Dioscorea Japonica Root Extract, Laminaria Japonica Extract, Ulmus Davidiana Root Extract, Viola Mandshurica Flower Extract, Chamaecyparis Obtusa Leaf Extract, Origanum Vulgare Leaf Extract, Salix Alba (Willow) Bark Extract, Cinnamomum Cassia Bark Extract, Cynanchum Atratum Extract, Portulaca Oleracea Extract, Scutellaria Baicalensis Root Extract, Allantoin.



## pH REDUCTANT

The restoration of skin pH after NOVA or ZYMO stimulation affects the barrier homeostasis, the integrity and strength of the stratum corneum, the degree of hydration, the balance of microflora, as well as the antimicrobial defense mechanisms of the skin. Normal skin pH values are 4.7 - 5.5.

**Active ingredients:** PEPTIDES 350pmm: Acetyl Hexapeptide-8, Copper Tripeptide-1, Palmitoyl Tripeptide-1, Tripeptide-1, Acetyl Octapeptide-3, Hexapeptide-9, Palmitoyl Hexapeptide-12, Palmitoyl Tetrapeptide-7, Nonapeptide-1.

**ENZYMES 2000pmm:** Saccharomyces/Artemisia Princeps Leaf Ferment Filtrate, Saccharomyces/Grape Ferment Extract, Saccharomyces/Imperata Cylindrica Root Ferment Extract, Saccharomyces/Panax Ginseng Root Ferment Filtrate, Saccharomyces/Rice Ferment Filtrate. **MOISTURIZING:** Betaine, Trehalose, Sodium PCA, Sodium Hyaluronate. **REGENERATION:** Snail Secretion Filtrate. **VITAMINS:** Pantenol (Vitamin B5).

**HERB EXTRACTS:** Aloe Barbadensis Leaf Extract, Broccoli Extract, Camellia Sinensis Leaf Extract, Centella Asiatica Extract, Hamamelis Virginiana Leaf Extract, Hippophae Rhamnoides Fruit Extract, Tea Tree Leaf Extract, Portulaca Oleracea Extract, Punica Granatum Fruit Extract, Rosa Centifolia Flower Extract, Anise Fruit Extract, Allantoin.

# ADAPTIVE SKIN PROBIO

## BALANCING SKIN MICROBIOME

ADAPTIVE SKIN PROBIO skincare line is developed to balance the microbiome of the skin, for enhancing local skin immunity to increase protective properties, block inflammatory reactions, prevent moisture loss, activate fibroblasts, create antioxidant protection. It is recommended for permanent use for all people with dehydrated and problematic skin, after aggressive pro- cedures and with severe skin sensitivity, with pH disturbances and reduced local immunity.







## ADAPTIVE SKIN PROBIO TONER

The Adaptive Probio Toner based on a unique probiotic complex, enriched with a high concentration of beta-glucan, berry extracts, peptides and amino acids, stabilizes the state of the skin microflora. It is designed to restore the skin barrier, stabilize skin immunity and protect against environmental influences.

Restores optimal water balance quickly and permanently. Softens, soothes irritated skin, balances the skin microbiome, improves protective functions and maintains an optimal pH level.

**Probiotics concentration:** 300ppm / B-glucan : 2000ppm / Capacity: 250ml

**Active Ingredients:** Salicylic Acid, Citric Acid, Acnotide (Glycine, Alanine, Glutamic Acid, Serine, Arginine), Demelaxyl (Nonapeptide-1, Piper Methysticum Root Extract), Wrinkle Free J316 (Hexapeptide-61 Dimer), Tripeptide copper-1, Glutathione, Guizulen,  $\beta$ -glucan, allantoin, Pulsatilla Koreana extract, Salix Alba (Willow) Bark, Usnea Barbata (Lichen) Extract, Zanthoxylum Piperitum Fruit Extract, Myrtus Communis Extract, Iris Florentina Root Extract.



## ADAPTIVE SKIN PROBIO EMULSION

The Adaptive Probio Emulsion based on a unique probiotic complex, enriched with a high concentration of beta-glucan, stabilizes the state of the skin microflora. It is designed to restore the skin barrier, stabilize skin immunity and protect against environmental influences.

Moisturizes, softens, soothes and rebuilds the skin microbiome, improves protective functions and maintains an optimal pH level.

**Probiotics concentration:** 300 ppm /  $\beta$ -glucan 93,3%: 2000 ppm /

**Peptide concentration:** 200 ppm / Capacity: 150ml / 100ml

**Active Ingredients:** Wrinkle-Free J316™ Peptides, Triple M Complex™, Betaglucan, Copper-1 Tripeptide, Olive Oil, Grapefruit Extract, Hyaluronic Acid, Panthenol, Shea Butter, Ascophyllum, Rice Enzyme, Mistletoe Enzyme, Enzyme soybean, emperors root extract



## ADAPTIVE SKIN PROBIO DETOX MASK

Detox Mask with peptides and algae deeply nourishes the skin the skin with vitamins and microelements, tightens pores, tones up the skin.

The effect of applying the mask is noticeable immediately - the puffiness goes away, the skin becomes fresh and taut.

**Peptide concentration:** 300ppm / Capacity: 250ml

**Active ingredients:** Algae, Hydro GF3 Liposome™ and stabilized Vitamin C, Beta-glucan, Copper-1 tripeptide



## ADAPTIVE SKIN PROBIO CREAM

Adaptive Probio Cream based on a unique prebiotic complex, enriched with a high concentration of beta-glucan, balances the skin microflora. It is designed to restore the skin barrier, stabilize skin immunity and protect against environmental influences. Moisturizes, softens, soothes the skin, restores the skin microbiome, improves protective functions and maintains an optimal pH level. For all skin types.

**Probiotics concentration:** 500 ppm

**$\beta$ -glucan 93,3%:** 3000 ppm

**Peptide concentration:** 500 ppm / Capacity: 50ml

### Active ingredients:

**PEPTIDES AND AMINO ACIDS:** Triple M Complex, Copper tripeptide-1.

**PREBIOTICS:** Saccharomyces/Viscum Album (Mistletoe) Ferment Extract, Lactobacillus/Soybean Ferment Extract, Saccharomyces/Imperata Cylindrica Root Ferment Extract, Glucose, Aspergillus/Rice Ferment Extract, Galactomyces Ferment Filtrate.

**VITAMINS:** Tocopherol, Panthenol, Niacinamide, Adenosine.

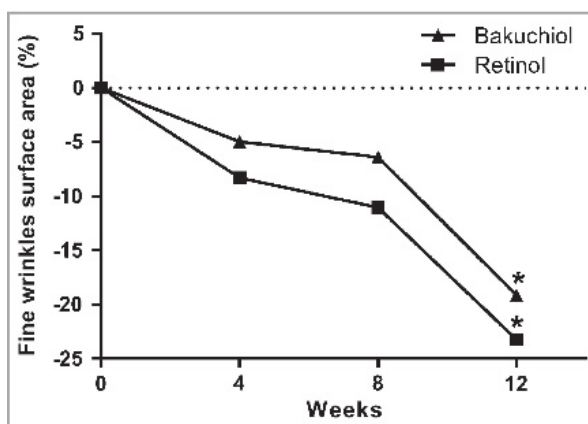
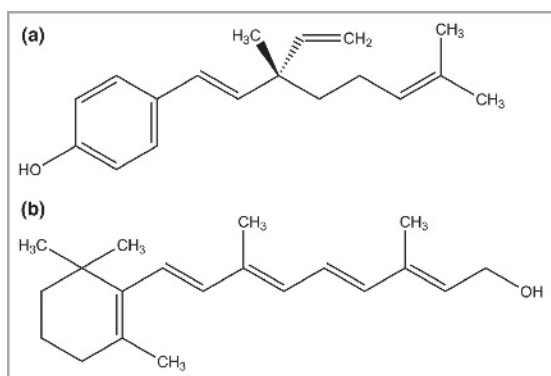
**HYAL COMPLEX for deep hydration:** Beta-glucan, Sodium Hyaluronate, Hydrolyzed Hyaluronic Acid, Acetylated Sodium Hyaluronate, Ceramide NP, Betaine.

**PLANT EXTRACTS:** Tropaeolum Majus Extract, Myrtus Communis Extract. **DERMAFLUX:** Urea, Yeast Amino Acids, Trehalose, Inositol, Taurine, Betaine.

# VITA FORCE

## REVITALIZING PEPTIDE THERAPY

VITA FORCE skincare line gives the skin "vitality" and provides deep and complete reconstruction and regeneration of skin cells. The targeted effect of active ingredients on the main mechanisms underlying the evolutionary changes in the skin allows a significant improvement in the appearance of the skin, both in biological and photoaging. The effect of these products on generative, protective and repair mechanisms at the level of the epidermis and dermis is extensive and long-term.



Bakuchiol ingredient is a herbal alternative to Retinol. It is a herb ingredient derived from the seeds of hazel-leaved psoralea, which has long been used in Ayurvedic and Chinese traditional medicine systems.

Bakuchiol stimulates collagen production, fights wrinkles, improves skin elasticity and suppresses melanin production like retinol. But at the same time, it is safer and will be applicable even for very sensitive skin, since it almost does not cause irritation.

Bakuchiol is a functional analogue of topical retinoids, and both compounds have been shown to induce similar gene expression in the skin and lead to the leveling of signs of skin photodamage.

Structurally, bakuchiol (a) and retinol (b) are different, but functionally very similar, because they act on the skin in the same way. Namely, they activate the production of collagen I, III, IV types and at the same time suppress the work of an enzyme that attacks and destroys collagen.



## VITA FORCE BAKUCHIOL CREAM

Bakuchiol Cream with 0.5% bakuchiol ingredient is a new top product in cosmology. From the first application, the skin revives vitality. The peptide complex controls the renewal of the epidermis and protects against free radicals.

The vitamin complex has antioxidant protection, soothes and brightens the skin tone. The complexion is brighter and the natural radiance of the skin is enhanced.

The moisturizing complex and herb extracts maintain optimal moisture levels, while natural oils restore the epidermal barrier, leaving the skin comfortable.

The texture of the cream is easy to apply and absorbs instantly. Designed for all skin types.

**Peptide concentration:** 400 ppm / Capacity: 50 ml

**Active ingredients:**

**Bakuchiol:** 0.5%

**Restoration of the epidermal barrier:** lecithin, shea butter, macadamia seed oil.

**Peptides:** Copper tripeptide-1, rh-oligopeptide-1

**Herbal Ingredients:** Pyrus Malus (Apple) Fruit Extract, Prunus Salicina Fruit Extract, Prunus Persica (Peach) Fruit Extract, Diospyros Kaki Fruit Extract.

**Vitamins:** tocopherol acetate (Vit. E), niacinamide (Vit. B3), panthenol (Vit. B5), sodium ascorbate phosphate (stabilized vit. C)

**Hydration:** sodium hyaluronate, betaine, adenosine.

# DEMELA

## BRIGHTENING SKINCARE LINE

DEMELA skincare line is for brightening skin, for those who want snow-white, porcelain skin without freckles and age spots. Active ingredients proven anti-pigmentation and safe, do not harm the skin. DEMELA skincare line has the cumulative effect: it effectively brightens the skin, even out its tone, while nourishing and moisturizing the skin.



## ILLUMINATING LINE



### DEMELA MOLECULAR PEEL

Molecular peeling gel improves the quality of the skin, brightens and increases its density. The balanced formula of highly active acids, peptides and herb extracts actively stimulates the renewal of the epidermis without discomfort and side effects.

**Peptide concentration:** 10ppm / Capacity: 150 ml

**Active Ingredients:** Lactic Acid, Glycolic Acid, Citric Acid, Prunus Mume Fruit Extract, Crataegus Oxyacantha Fruit Extract, Salicylic Acid, Glycyrrhiza Glabra (Licorice) Root Extract, Centella Asiatica Leaf Extract, Centella Asiatica Leaf Extract Aloe Barbadosensis, Niacinamide, Arbutin, Tripeptide Copper-1

## DEMELA MOLECULAR OIL

Double-acting clarifying Molecular Oil for massage of the face. Active ingredients moisturize, nourish and gently remove age spots, even out skin tone. Used for massage and is a DEMELA MOLECULAR PEEL remover.

**Peptide concentration:** 300ppm / Capacity: 150 ml

**Active Ingredients:** Vitis Vinifera (Grape) Seed Oil, Camellia Japonica Seed Oil, Simmondsia Chinensis (Jojoba) Seed Oil, Glycine, Tocopheryl Acetate (Vit. E), Arbutin, Niacinamide (Vit. B3), copper tripeptide-1



## DEMALA MASK BLACK FOR WHITE

Brightening intense Mask Black for White to brighten the tone, improve the quality of the skin, increase its density, reduce hyperpigmentation. Inhibiting tyrosinase, blocks melanin synthesis and significantly reduces dark spots, promoting even tone.

**Peptide concentration:** 300ppm / Capacity: 250ml

**Active ingredients:** Portulaca Oleracea Extract, Sodium Hyaluronate, Gleditsia Australis Fruit Extract, Polygonum Cuspidatum Root Extract, Prunella Vulgaris Leaf Extract, Cnidium Monnieri Fruit Extract, Pearl Extract, Seaweed Extract, Glycine Soja Seed Extract (Soybean), Oryza Sativa Bran Extract (Rice), Sesamum Indicum (Sesame) Seed Extract, Niacinamide, Arbutin, Copper Tripeptide-1, sh-Oligopeptide-1, sh-Polediptide-1, sh-Polediptide-11, sh-Polediptide-22, Sodium Ascorbyl Phosphate, sh -Polydiptide-7



## DEMELA MOLECULAR CREAM

The innovative Molecular Cream for brightening over pigmented skin. Active ingredients moisturize, nourish and gently remove age spots, even out skin tone. For all skin type.

**Peptide concentration:** 700 ppm / Capacity: 150ml / 50ml

**Active ingredients:** sh-Polypeptide-7, Arginine, Arbutin, Glutathione, Panthenol, Portulaca Oleracea Extract, Lecithin, Glycerin, Niacinamide, Sodium Hyaluronate, Morus Alba Root Extract, Centella Asiatica Leaf Extract, Gleditsia Australis Fruit Extract, Polygonum Cuspidatum Extract, Prunella Vulgaris Leaf Extract, Cnidium Monnieri Fruit Extract.



# MEGAPOLIS

## PEPTIDE THERAPY FOR TIRED AND STRESSED SKIN

MEGAPOLIS skincare is a special care, with stress control, capable of minimizing not only age-related changes, but also harm from the environment.

The skin of the citizens of megalopolises is prone to irritation and allergies, age spots and rashes. The air in big cities is full of dust, exhaust fumes, smoke and dirt. These harmful substances are deposited on the face, as a result, the skin becomes dull. To minimize this harm, a special line of MEGAPOLIS skincare has been developed, taking into account all the features of life in huge cities.

The skin reacts to an unhealthy environment primarily by the loss of moisture. Because of this, metabolic processes and regenerative function are disrupted, the skin of the face dries and flakes. MEGAPOLIS skincare will solve the skin problems and leave skin healthy grow.



### ACTIVE INGREDIENTS:

100% real nanoemulsion cream provides moisturizing, UV protection and antioxidant, ensuring optimal skin activity to restore skin vitality. 100% real nanoemulsion cream with an average droplet size of 50 nm are created first by 2-phase complex nanoemulsification at the O-point, which ensures favorable penetration of peptides, vitamins and other ingredients into the skin. Moisturizing effect for optimal skin activity is provided by liquid crystals together with other ingredients of allantoin, DL-panthenol, tocopheryl acetate and oriental herb extracts protect the skin from UV rays and provide the antioxidant effects. Suppress the development of erythema and the formation of melanin from UV rays due to the protective effects of antioxidants and trapping free radicals.

**AQUATIDE 5000 (INCI):** Heptasodium Hexacarboxymethyl Dipeptide-12) - The natural moisturizing factor (NMF) in the stratum corneum is highly water-retaining and plays an important role in the barrier function of the skin. Pyrrolidone carboxylic acid (PCA) is one of the main components of NMF found in human skin.

# PEPTIDE THERAPY FOR TIRED AND STRESSED SKIN



## MEGAPOLIS UNIVERSAL CLEAN

Universal cleansing foam for all types of tired skin of citizens in large cities. Gently removes impurities and makeup residues, leaving skin clean and fresh. Does not disturb skin pH.

**Peptide concentration:** 50 ppm / Capacity: 150 ml.

**Active ingredients:** Vitamin E, Panthenol, Raspberry Ketone, sh-oligopeptide-1, sh-oligopeptide-2, sh-polypeptide-1, sh-polypeptide-22, Moist Ha-5, Lecithin, Ceramides, Beta-glucan, Allantoin.



## MEGAPOLIS THIN iCREAM

Intellectual nano-cream of fine texture with multifunctional action to protect and restore the skin of citizens in large cities. The nano-sized active ingredients help to restore tired, stressed skin. Provides a long-lasting effect.

**Peptide concentration:** 600 ppm / Capacity: 100 ml.

**Active ingredients:** Squalane, ceramides, Aquatide, Adenosin, Shea butter, Meadowfoam Seed Oil, Evening Primrose Oil, hyaluronic acid, allantoin, tocopheryl acetate, niacinamide panthenol, PPG-20 tocopheret-50, Heptasodium Hexacarboxymethyl Dipeptide-12, Aloe Barbadensis Leaf Extract, Witch Hazel Leaf Extract, Hippophae Rhamnoides Extract, Centella Asiatica Extract, Houttynia Cordata Extract, Coptis Japonica Root Extract.



# REJUSOME

## EXOSOME THERAPY

The Rejusome line redefines advanced skin care with the power of exosomes, innovative biotechnological components that enhance cell regeneration and restore skin vitality. Designed to visibly reduce signs of aging and improve skin texture and luminosity, Rejusome offers profound and effective solutions for younger, more radiant skin. Ideal for those seeking transformative results with cutting-edge technology.

## EXOSOME THERAPY



## REJUSOME EXO BOOST MIST

Light and refreshing mist that provides deep hydration and relieves dryness, improving skin tone and luminosity. Ideal for hot climates or air-conditioned environments, it provides an instant calming effect, without disturbing your makeup.

**Concentration of peptides and growth factors:** 250 ppm / Capacity: 150 ml

### ACTIVE INGREDIENTS:

**Peptide and Growth Factor Complex:** Stromal Cell Conditioned Media Extract, Copper Tripeptide-1, sh-Polypeptide-22, sh-Polypeptide-1, sh-Oligopeptide-2, sh-Oligopeptide-1.

**Hyaluronic Acid Complex:** Sodium Hyaluronate, Sodium Hyaluronate Crosspolymer, Hydroxypropyltrimonium Hyaluronate, Hyaluronic Acid, Hydrolyzed Hyaluronic Acid.

**Botanical Extracts:** Centella Asiatica, Scutellaria Baicalensis Root, Polygonum Cuspidatum Root, Edelweiss Flower/Leaf Extract, Camellia Sinensis Leaf Extract, Licorice Root, Rosemary Leaf Extract, Chamomile Flower Extract.

**Other Actives:** Hydrolyzed Collagen, Niacinamide.

Hypoallergenic formula suitable for all skin types, including sensitive skin or skin prone to dermatitis and acne.

## REJUSOME EXO BOOST CREAM

Advanced rejuvenating cream that nourishes and strengthens the skin with a powerful combination of exosomes and peptides. Ideal for mature, dry or sensitive skin, it helps restore the lipid barrier and promotes a healthy microbiome. The skin becomes smoother, toned and rejuvenated.

**Exosome concentration:** Greater than 900ppm / Capacity: 50 ml.

**Active ingredients:** Conditioned Media Extract, Acetyl Hexapeptide-8, sh-Polypeptide-1, sh-Oligopeptide-2, sh-Oligopeptide-1, sh-Polypeptide-22, Lactococcus Ferment Lysate, Bifida Ferment Lysate, Lactobacillus Ferment Lysate, Centella Asiatica Extract, Polygonum Cuspidatum Root Extract, Scutellaria Baicalensis Root Extract, Glycine Soja (Soybean) Peptide, Niacinamide, Adenosine, Camellia Sinensis Leaf Extract, Glycyrrhiza Glabra (Licorice) Root Extract, Rosmarinus Officinalis (Rosemary) Leaf Extract, Chamomilla Recutita (Matricaria) Flower Extract, Shea Butter, Panthenol, Beta-Glucan, Olea Europaea (Olive) Fruit Oil, Macadamia Ternifolia Seed Oil, Cocos Nucifera (Coconut) Oil, Hydrolyzed Collagen.





## REJUSOME EXO BOOST SERUM

Booster serum that transforms the skin thanks to a high concentration of exosomes, peptides and probiotic lysates. Its advanced formula visibly improves the softness, elasticity and hydration of the skin, reduces wrinkles and evens tone, providing radiant luminosity from within. Its light texture absorbs quickly, leaving a fresh sensation without stickiness. Ideal for all skin types, including sensitive skin.

**Exosome concentration:** 750 ppm / Capacity: 30 ml

**Active ingredients:** Conditioned Media Extract, Acetyl Hexapeptide-8, sh-Octapeptide-4, sh-Decapeptide-7, sh-Oligopeptide-9, sh-Pentapeptide-19, rh-Oligopeptide-1, Lactococcus Ferment Lysate, Bifida Ferment Lysate, Lactobacillus Ferment Lysate, Zingiber Officinale (Ginger) Root Extract, Schisandra Chinensis Fruit Extract, Camellia Sinensis Leaf Extract, Glycyrrhiza Glabra (Licorice) Root Extract, Centella Asiatica Extract, Asiaticoside, Asiatic Acid, Madecassic Acid, Madecassoside.

## REJUSOME EXO BOOST MASK

Booster mask for radiant skin, formulated with a high concentration of exosomes, peptides, probiotics, plant extracts, hyaluronic acid and betaine. This mask combats signs of aging such as wrinkles, pigmentation, sagging and dullness. Its lifting effect, along with deep hydration and regeneration, visibly transforms the skin, improving tone and texture while protecting it from external irritants.

The bamboo fiber base fits like a "second skin," ensuring intensive absorption of active ingredients and providing additional recovery after aesthetic procedures.

**Capacity:** 25ml / 5 pieces

**Active ingredients:** Stromal Cell Conditioned Media Extract, Acetyl Hexapeptide-8, Copper Tripeptide-1, Palmitoyl Pentapeptide-4, rh-Oligopeptide-1, Lactococcus Ferment Lysate, Bifida Ferment Lysate, Galactomyces Ferment Filtrate, Centella Asiatica Extract, Scutellaria Baicalensis Root Extract, Glycyrrhiza Glabra (Licorice) Root Extract, Camellia Sinensis Leaf Extract, Chamomilla Recutita (Matricaria) Flower Extract, Portulaca Oleracea Extract, Monarda Didyma Leaf Extract, Salvia Officinalis (Sage) Extract, Lavandula Angustifolia (Lavender) Extract, Aloe Barbadensis Leaf Extract, Betaine, Sodium Hyaluronate.



# MESO CONCENTRATES FOR MICRONEEDLING



## REJU-WRINKLE CONCENTRATE

Concentrate for rejuvenation of aged skin has a regeneration and botox effect. It is recommended to reduce mimic and age wrinkles, to revitalize tired stressed skin.

The concentrate of deep action: replenishes optimal moisture level, levels out horizontal mimic wrinkles, significantly reduces the depth of vertical wrinkles, brightens the skin

**Peptide concentration:** 3000 ppm / Capacity: 20 ml

**Active ingredients:** Acetyl Hexapeptide-8, Hexapeptide-61, Nonapeptide-1, Triple M Complex, Copper tripeptide-1, Sodium Hyaluronate,  $\beta$ -glucan, Trehalose, Salix Alba (Willow) Bark Extract.

## MELA-BRIGHT CONCENTRATE

Skin Brightening Concentrate is a powerful antioxidant with Glutathione, brightens hyper-pigmentation. Provides direct inactivation of tyrosinase by binding copper-containing active enzymes, neutralizes free radicals and peroxides, which contribute to the activation of tyrosinase and the formation of melanin.

**Peptide concentration:** 3000 ppm / Capacity: 20 ml.

**Active ingredients:** Nonapeptide-1, Glutathione, Niacinamide, Tranexamic Acid, Copper tripeptide-1, Triple M Complex, Acetyl Hexapeptide-8,  $\beta$ -glucan,  $\alpha$ -bisabolol, Myrtus Communis Extract Tropaeolum Majus Extract, Salix Alba (Willow) Bark Extract.



## RED-CALMING CONCENTRATE

Concentrate for sensitive skin is an active anti-inflammatory and soothing ampoule for sensitive skin with signs of irritation: redness, dryness, itching. Strengthens the dermoepidermal junction. Doubles the number of hemidesmosomes. Enhances adhesion of keratinocytes. Improves the healing of microdamaged skin.

**Peptide concentration:** 3000 ppm / Capacity: 20 ml.

**Active ingredients:** Acetylene Hexapeptide-10, Copper tripeptide-1, Nonapeptide-1, Triple M Complex, Chamomilla Recutita (Matricaria) Extract, Sodium Hyaluronate,  $\beta$ -glucan, Trehalose, Salix Alba (Willow) Bark Extract.

## HAIR-GROWTH CONCENTRATE

Hair Growth Concentrate includes the bio tech peptides,  $\beta$ -glucan and specially selected 16 herb extracts.

Clinical and scientific studies of the Hair Growth Concentrate had confirmed its absolute safety, high efficiency and the absence of allergic reactions.

**Peptide concentration:** 3000 ppm / Capacity: 20 ml.

**Active ingredients:** Copper Tetrapeptide-52, Copper tripeptide-1, Triple M Complex, Niacinamide, Panthenol, Lactobacillus Ferment,  $\beta$ -glucan,  $\alpha$ -bisabolol, Camellia Japonica Seed Oil Jojoba Seed Extract, Walnut Seed Extract, Menthol, Ectoin and Unique herb complex for hair growth.





## DELICATE CLEANSING MILK

The Gentle Cleansing Milk, incredibly soft, silky and delicate, removes all types of makeup from the face and eyes. Its delicate texture cleanses, leaving skin velvety, while peptides and herbal extracts leave skin soft and soothed.

Safe surfactants gently cleanse the skin without violating the epidermal barrier or skin pH.

**Peptide concentration:** 150 ppm / Capacity: 250 ml

**Active Ingredients:** Triple M Complex, Copper Tripeptide-1, Aloe Barbadensis Leaf Extract, Althea Rosea Root Extract, Hamamelis Virginiana (Witch Hazel) Extract, Urea, Coconut Oil, Niacinamide (Vitamin B3), Acetate Tocopheryl (Vitamin E), 7 natural herbal extracts.



## SEBO XTRACTOR

Special gel for deep cleansing that purifies pores by completely dissolving excess sebum, softens and eliminates blackheads, grease and impurities.

Keratolytic salicylic acid and urea smooth the surface of the stratum corneum, which facilitates skin cleansing, especially mechanical extraction of comedones, milliums, manual and instrumental cleaning of enlarged pores.

Increases the effectiveness of ultrasonic peeling, dermabrasion, suction cleansing, facial brushing and gas-liquid peeling.

**Peptide concentration:** 150 ppm / Capacity: 150 ml

**Active Ingredients:** Artemisia Princeps Leaf Extract, Urea, Betula Platyphylla Japonica Bark Extract, Diospyros Kaki Leaf Extract, Rhus Semialata Gall Extract, Portulaca Oleracea Extract, Sodium Hyaluronate, Dioscorea Japonica Root Extract, Aloe Barbadensis Leaf Extract, Nelumbo Nucifera Root Extract, Aloe Barbadensis Fruit Extract Gleditsia Australis, Polygonum Cuspidatum Root Extract, Prunella Vulgaris Leaf Extract, Cnidium Monnieri Fruit Extract, Salicylic Acid, Rosmarinus Officinalis (Rosemary) Leaf Oil, Copper Tripeptide-1



## O2 THERAPY ACTIVE GEL

The active oxygen gel with peptides, vitamins and herbal extracts provides natural tissue regeneration processes, improves microcirculation, promotes cellular oxygenation and nourishes the skin. Activates the synthesis of collagen and elastin, improves skin elasticity. It provides an anti-aging effect and gives you a healthy and flawless appearance

**Peptide concentration:** 150 ppm / Capacity: 250 ml.

**Active ingredients:** Triple M Complex, Copper tripeptide-1, Aloe Barbadensis Leaf Extract, Althea Rosea Root Extract, Niacinamide (B3), Tocopherol (vitamin E), Panthenol.

# INSENSIVE HYAL HYDRATANT

Intensive multi-level hyaluronic acid moisturizer for deep skin hydration. The patented MOIST-HA5 formula consists of 5 chemical forms of hyaluronic acid with different levels of penetration and restores optimal water balance, eliminating signs of skin dehydration.

**Peptide concentration:** 250 ppm / Capacity: 150 ml.

**Active ingredients:** Anise fruit extract, Salix Alba extract, Raspberry ketone, EGF, MOIST HA5, MultiEx Phyto Complex, Trehalose, Beta-glucan, Hydrolyzed collagen, Arginine.



# REPAIR MASK POST-PROCEDURE

The revitalizing Post-Procedure Mask has an intense soothing and moisturizing effect, reducing skin redness. Instantly eliminates skin irritation reactions and uncomfortable burning sensations. Softens and hydrates the skin, improves its texture and evens skin tone. It can be applied as a "Beauty Mask" to obtain an immediate luminosity effect.

**Peptide concentration:** 550 ppm / Capacity: 250 ml.

**Active ingredients:** Hydro-GF3, Copper tripeptide-1, Palmitoyl oligopeptide Dipotassium Glycyrhizate, Panthenol, Betaine, Trehalose, Allantoin, Hydrolyzed collagen, Sodium hyaluronic acid, Stabilized vitamin C, Portulaca Oleracea extracts, Carica Papaya fruit (Papaya), Fruit Prunus Mume, Crataegus Oxyacantha Fruit, Leaf of Aloe Barbadensis, Gleditsia Australis Extract, Polygonum Cuspidatum Extract, Cnidium Monnieri Extract, Prunella Vulgaris Leaf.



# HYDRO CALMING PHYSIO GEL

Physio Gel hydrates and soothes the skin, stimulates metabolic processes in cells, deeply nourishes and moisturizes, restores cellular respiration and improves the quality of sensitive and dehydrated skin. It is an ideal "contact" gel with high conductivity, providing comfort during appliance procedures.

Physio Gel provides long-lasting slip and excellent contact of the applicators with the skin. The gel is intended for procedures with biorevitalization devices, since it contains hyaluronic acid. The product can be used on sensitive skin and is compatible with almost all appliance procedures.

**Peptide concentration:** 300 ppm / Capacity: 470 ml.

**Active Ingredients:** Hydro-GF3, Sodium Hyaluronic Acid, Arginine, Allantoin, Aloe Barbadensis Leaf Powder, Gleditsia Australis Fruit Extract, Polygonum Cuspidatum Extract, Prunella Vulgaris Leaf Extract, Cnidium Monnieri Fruit Extract, Portulaca Oleracea, Stabilized Vitamin C, Panthenol (Vitamin B5), Ceramides.





## RF LIFTING PHYSIO CREAM

Physio Special Cream with silk (silkworm extract) is designed for procedures with devices and massages. It increases the effectiveness of anti-aging procedures, being an excellent contact cream for the face and body. Its active ingredients hydrate, nourish and rejuvenate the skin. Minimizes the possible reaction of the skin to exposure to a physical factor.

**Peptide concentration:** 300 ppm / Capacity: 470 ml.

**Active ingredients:** Hydro-GF3, Silkworm Cocoon Extract, Centella Asiatica Leaf Extract, Portulaca Oleracea Extract, Morus Alba Root Extract, Allantoin, Betaine, Stabilized Vitamin C, Tocopherol Acetate (Vitamin E), Lecithin.



## LIPO CONTROL PHYSIO GEL

Lipolytic Gel for braces stimulates lipolysis and activates blood circulation in fatty areas of the face and body. It is compatible with almost all appliance procedures and has a strong cooling effect.

**Peptide concentration:** 300 ppm / Capacity: 470 ml.

**Active Ingredients:** Hydro-GF3, Menthol, Chamomilla Recutita (Matricaria) Flower Extract, Centella Asiatica Leaf Extract, Aloe Barbadensis Leaf Extract, Gleditsia Australis Fruit Extract, Polygonum Cuspidatum Extract, Prunella Leaf Extract Vulgaris, Cnidium Monnieri Fruit Extract, Caffeine, Coenzyme A, Lavandula Angustifolia (Lavender) Flower Extract.



## DRAINAGE PHYSIO GEL

Lymphatic Drainage Gel for appliance devices improves lymphatic filtration and excretion, promoting the elimination of excess fluids and toxins, and reducing tissue swelling. It is compatible with almost all treatments with devices for the face and body. It has a slight cooling effect.

**Peptide concentration:** 300 ppm / Capacity: 470 ml.

**Active Ingredients:** Hydro-GF3, Menthol, Chamomilla Recutita (Matricaria) Flower Extract, Centella Asiatica Leaf Extract, Aloe Barbadensis Leaf Extract, Gleditsia Australis Fruit Extract, Polygonum Cuspidatum Extract, Prunella Leaf Extract Vulgaris, Cnidium Monnieri Fruit Extract, Caffeine, Coenzyme A, Lavandula Angustifolia (Lavender) Flower Extract.

# SLIDING MASSAGE BALSAM

The Functional Massage Balm with a long-lasting gliding effect spreads easily over the skin during the massage. Ideally nourishes, moisturizes and restores the skin's epidermal barrier.

**Peptide concentration:** 300 ppm / Capacity: 250 ml.

**Active ingredients:** Hydro-GF3, Glycerin, Aloe Barbadensis Leaf Extract, Sodium Hyaluronate, Ginkgo Biloba Nut Extract, Portulaca Oleracea Extract, Cornus Officinalis Fruit Extract, Poria Cocos Extract, Gleditsia Australis Fruit Extract, Polygonum Cuspidatum Extract, Prunella Leaf Extract Vulgaris, Cnidium Monnieri Fruit Extract, Palmitoyl Oligopeptide, Copper Tripeptide-1.



# CARBOXY THERAPY MASK

The Carboxytherapy Therapy mask is an innovative method of epidermal rejuvenation based on the properties of sodium bicarbonate.

Baking soda has antioxidant, antiseptic and regenerative properties. The epidermis reacts to exposure to sodium bicarbonate as if it were stress and, in response, increases blood circulation and stimulates the active synthesis of collagen, which is the main building material for cells.

**Peptide concentration:** 100 ppm

**Capacity:** 250 ml \* 10 sheet masks

**Active ingredients:** Sodium Bicarbonate, Copper Tripeptide-1, Licorice Root Extract (Glycyrrhiza Glabra), Star Anise Fruit Extract (Illicium Verum), Pine Densiflora Extract, Quercus Acutissima Fruit Extract, Angelica Root Extract Gigas, Cnidium Officinale Root Extract, Angelica Root Extract Dahurica, Angelica Tenuissima Root Extract, Chrysanthemum Morifolium Flower Extract, Lonicera Japonica (Honeysuckle) Flower Extract, Sophora Japonica Bud Extract (Vitamin C), Glycerin, Eucalyptus Globulus Leaf Oil, Rose, Rosa Rugosa Flower Extract.



# FASCIA MASSAGE GEL

Fascia massage gel with firming and anti-cellulite effect. It provides a massage to the muscles of the body, stimulates the metabolism, which ensures the elimination of excess water and toxins, and reduces swelling. Activates fat metabolism, tones the skin and gives it elasticity.

The gel-rich formula contains fermented components and peptides that hydrate the skin, restore the skin microbiome and promote the elimination of toxins, providing elasticity to the skin.

The composition is enriched with caffeine, black sugar and Arabica coffee fruit extract. Maintains normal hydrolipid balance. The skin becomes more uniform and elastic: it eliminates toxins and waste; reduces swelling; improves skin elasticity and tone; promotes cell regeneration.

**Peptide concentration:** 400 ppm / Capacity: 250 ml

**Active ingredients:** Black Molasses Powder, Caffeine, Arabica Coffee Seed Extract (Coffea Arabica), Pullulan, Copper Tripeptide-1, sh-Oligopeptide-1, sh-Oligopeptide-2, sh-Polypeptide-1, sh-Polypeptide-22, Bifid Ferment Lysate, Lactococcus Ferment Lysate, Lactobacillus Ferment Lysate, Glycerin.







## NEOSLIM

NEOSLIM is the drainage cocktail with lipopeptides that triggers skin renewal. It has a pronounced antiglycation and antioxidant effect. Improves lymphatic drainage, eliminates toxins and fat accumulations.

**Concentration:** 5ml x 1 vial / 2 vials x 1 box

**Active ingredients:** Caffeine, Carnitine, Rutin, Peptides.



## BOTOLUX

Meso with botox-like neuropeptides and a patented high-concentration form of hyaluronic acid CUBE3 provides a dermomimetic, anti-aging, firming, anti-wrinkle and hydrating effect.

**Concentration:** 5ml x 1 vial / 2 vials x 1 box

**Active ingredients:** Water, Sodium Hyaluronate, Acetyl Hexapeptide-8, Phenoxyethanol, Benzyl Alcohol, Sodium Hydroxide.



## BIOXOME

BioXome is the revolutionary vegan mesococktail with a high concentration of peptides, ferments and hyaluronic acid, providing an active rejuvenation effect. Strengthens the skin barrier and increases skin hydration.

**Concentration:** 5ml x 1 vial / 2 vials x 1 box

**Active ingredients:** Lecithin, Acetyl glutamine, sh-Oligopeptide-1, sh-Oligopeptide-2, sh-Polypeptide-1, sh-Polypeptide-9, sh-Polypeptide-11, Bacillus/folic acid ferment filtrate extract, Sodium hyaluronate, Caprylyl glycol, Butylene glycol, 1,2-Hexanediol, Oligopeptide-34, Sodium ascorbate, Phenoxyethanol, Benzyl Alcohol, Sodium hydroxide.

# PPS REPAIR

## POST-SURGERY OR DERMATOLOGICAL PROCEDURE CARE

### PPS REPAIR CREAM



PPS Repair Cream with anti-inflammatory and regenerating effect, provides maximum skin protection during the rehabilitation period after procedures. The Cream increases the rate of healing, guarantees correct epithelization of the skin and regenerates it.

A highly effective cream with a powerful anti-inflammatory, regenerating, soothing and anti-edema effect. Lipophilic and hydrophilic active ingredients of natural origin are ideal for all skin types, allowing the cream to act in a complex manner on the hydrolipid layer of the skin and provide a softening and regenerating effect.

The sterile PPS Repair Cream are designed to repair skin damage, relieve inflammation and eliminate skin irritation caused by aggressive medical procedures, such as surgical interventions, invasive cosmetic procedures, laser therapy, IPL rejuvenation, chemical peels.

**Peptide concentration:** 600ppm /Capacity: 30ml.

**Active ingredients:** Demelaxyl, wrinkle-free J316, serilesin, Triple M complex, acetylhexapeptide -8, copper tripeptide-1, glutathione. Moisturizing and regenerating: Black Tea Enzyme, Zymomonas Enzyme Extract, Centella Asiatica Leaf Extract, Hyaluronate Sodium. Herbal and vitamin complexes: Caulerpa algae extract (green caviar), niacinamide (vit. B3), adenosine, madekazoid and asiaticoside. Protective barrier: shea butter, low-density ceramides, hydrogenated lecithin. Skin immunity: Betaglukan.

### BB PERFECTOR (SPF 40+ / PA+++)



Multi-functional BB Perfector cream allows you to simultaneously mask skin imperfections and heal the skin, reliably protecting it from UV. Peptides and herb ingredients have an antioxidant effect, quickly moisturize and soothe the skin, eliminating redness and irritation.

BB Perfector gives a feeling of freshness and comfort. The innovative formula intensively nourishes skin and has a regenerating effect, creating absolute comfort and perfect skin protection. Visually improve the appearance of the skin.

**Peptide concentration:** 300 ppm / Capacity: 50ml

**Active ingredients:** Oligopeptide sh-1 (EGF), Oligopeptide sh-2 (IGF-1), Polypeptide sh-1 (bFGF), Polypeptide sh-22 (TGF-β1), Copper tripeptide-1, Serilesin (acetyl hexapeptide- 10), Grape Callus Culture Extract, Ipomoea Callus Culture Extract, Centella Asiatica Extract, Licorice (licoris) Root Extract, Camellia sinensis, Chamomile flower extract, Niacinamide, Sodium hyaluronate, Allantoin, Vitamin E, Ceramide, Mineral filters: Titanium. Dioxide, organic zinc oxide filters: ethylhexyl methoxycinnamate, ethylhexyl salicylate, octocrylene, bis-ethylhexyloxyphenol methoxyphenyl triazine.



## SUN PROTECTOR (SPF 50+/PA+++)

The Sun Protector cream with a very high spf level is suitable for any skin type, provides reliable comprehensive protection against all harmful effects of the urban environment: UV rays, free radicals, pollution. Helps maintain an even radiant tone, youthfulness and healthy skin. Non-greasy, non-sticky texture of the cream is quickly absorbed without leaving white marks.

**Peptide concentration:** 300ppm/ Capacity: 50ml

**Active ingredients:** Oligopeptide sh-1 (EGF), Oligopeptide sh-2 (IGF-1), Polypeptide sh-1 (bFGF), Polypeptide sh-22 (TGF- $\beta$ 1), Copper tripeptide-1, Serilesin (acetyl hexapeptide-10), dipotassium glycyrrhizate, trehalose, niacinamide, trehalose, beta-glucan, sodium hyaluronate, callus culture extract grape, ceramides, adenosine, Ipomoea callus culture extract, centella asiatica extract, licorice (licoris) root extract, Camellia sinensis extract, chamomile flower extract, panthenol, bisabolol, vitamin E, mineral filters: dioxide titanium, zinc oxide. Organic filters: ethylhexyl methoxycinnamate, ethylhexyl salicylate, octocrylene, bis-ethylhexyloxyphenol methoxyphenyl triazine

# HAIR GENESIS

## PEPTIDE ANTI HAIR LOSS CARE

Hair Genesis is the professional trichology system developed by Korean scientists for hair and scalp health. The system includes a complex of peptide products for use in the salon and at home, a special peeling procedure and a combination of products with physiotherapy techniques.



Therapeutic: in case of pathological conditions (hair loss for more than 2 months, thinning hair, inflammatory changes on the scalp), the patient should consult a doctor who will diagnose and prescribe treatment with the products and procedures of HAIR GENESIS. This products can be combined with pharmaceutical medications, injections, oral medications (as recommended by a specialist).

## ANTI-HAIR LOSS TREATMENT WITH PEPTIDES



### HAIR GENESIS SHAMPOO

Sulfate-free Peptide Shampoo perfectly cleanses the scalp and hair, nourishes, moisturizes, envelops the hair, protecting it from aggressive environmental influences. Helps prevent damage and hair loss. Strengthening and repairing damaged and dry hair, soothing effect on the scalp, against various types of peeling and irritation. Gentle cleansing for all hair types, suitable for daily washing, maintains scalp pH. Provides the restoration of the natural protective functions of the skin.

**Peptide concentration:** 30 ppm /Capacity: 300 ml

**Active ingredients:** HairGenesis1.1 , Copper Tripeptide-1 , Lactobacillus enzyme, Aspergillus enzyme, Panthenol, Sodium hyaluronate , Arabica Coffee Seed Oil , Herb complex 25 , Disodium Laureth Sulfosuccinate



## HAIR GENESIS PRE-TREATMENT SPECIAL CLEANSER

Hair Peeling Cleanser provides deep cleansing, stimulates the natural renewal of scalp cells, has anti-inflammatory and antioxidant effects, reduces the appearance of dandruff and seborrhea, Reduces the manifestation of fat content, stabilizes perspiration, Reduces excess hair loss, Improves blood circulation to the scalp, Improves skin penetration of the active ingredients of the HAIR GENESIS PEPTIDE TREATMENT peptide balm mask

**Peptide concentration:** 50 ppm / pH 2.8/ Capacity: 300 ml

**Active ingredients:** AHA complex: lactic acid 10%, glycolic acid 5%, natural salicylates of Willow bark extract, Papain (papaya fruit extract), HairGenesis1.1, Copper Tripeptide-1.



## HAIR GENESIS PEPTIDE TREATMENT

The Peptide Treatment Mask is designed for a complex effect on both the scalp and hair length. For hair: nourishment, hydration and shine. Volume without weighing down and easy combing. Provides the restoration of dry and damaged hair. For the scalp: enhances microcirculation and saturates the scalp and hair follicles with active peptides and regenerating herb extracts

**Peptide concentration:** 200 ppm /Capacity: 300 ml

**Active ingredients:** HairGenesis1.1, Copper Tripeptide-1, Macadamia oil, Japanese camellia oil, Evening primrose oil, Hydrogenated lecithin, Tocopherol acetate, Sodium hyaluronate, Urea, Panthenol, Ceramides, Polyquaternium-10, Vanillin butyl ether.



## HAIR GENESIS HAIR GROWTH STIMULATOR

The multi-component formula of Hair Growth Stimulator includes the main thing - biological peptide growth stimulants,  $\beta$ -glucan and specially selected 16 herb extracts. Clinical and scientific studies of the hair growth stimulator have confirmed its absolute safety, high efficiency and the absence of allergic reactions. They showed an increase in hair diameter of 89% and a significant increase in the number of new hair follicles. Analysis of the results of the morphological study also suggests an increase in the density of new hair follicles. The hair growth stimulator has a significant HAIR GROWTH STIMULATING ACTIVITY.

**Peptide concentration:** 300 ppm /Capacity: 140 ml.

**Active ingredients:** HairGenesis1.1, Copper Tripeptide-1, Triple M Complex, Enzyme lactobacillus, Glycolic acid, PhitoGenesis complex.

# HAIR GENESIS OIL ESSENCE

HairGenesis natural oil, enriched with fatty acids and lipids, promotes hair shine, forming a thin protective layer that helps retain moisture, smoothes the hair structure, adds shine and protects it from external and mechanical damage. It is especially recommended for use after perming and hair coloring. The patented active complex of 5-ALA acid and vitamin C prevents hair loss and promotes the growth of new hair.

**Peptide concentration:** 100 ppm / Capacity: 100 ml.

**Active ingredients:** Patented complex: 5-ALA acid and Vitamin C / Concentration: 0.7%  
Peptides: Copper tripeptide-1, Hydrolyzed silk peptide / Concentration: 100 ppm  
Natural oils: Olive oil, Sunflower oil, Rose oil castor, which provide shine, softness and prevent hair loss, accelerating hair growth. Glycerin, Vitamin E. Plant extracts: Angelica Daúrica Extract, Peony Lactiflora Root Extract, Dioscorea Japonesa Root Extract, Chinese Rehman-nia Root Extract, Ginseng, Cimicifuga Daúrica Root Extract, Coconut Extract, Root Extract from Licorice.

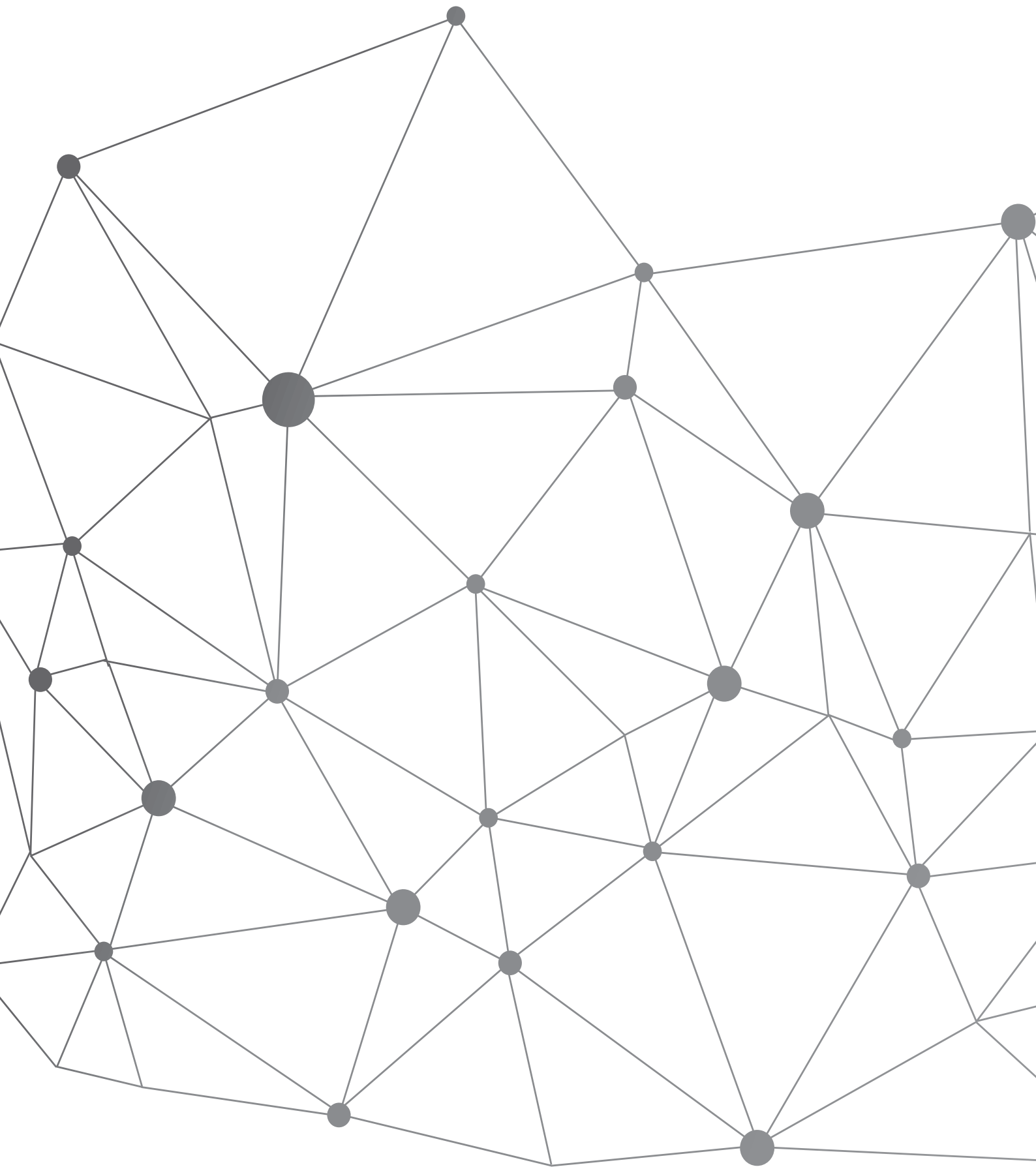
**Resveratrol:** powerful antioxidant that actively fights free radicals.



# HAIR GENESIS BLACK GARLIC CHAMPÚ

Shampoo with black garlic extract effectively cleanses the scalp and hair, nourishes, moisturizes and envelops the hair, protecting it from the aggressive effects of the environment. Helps prevent hair damage and loss. Strengthens and restores damaged and dry hair, while calming the scalp, combating different types of flaking and irritation. Provides gentle cleansing for all hair types, suitable for daily use, maintaining the pH balance of the scalp. Restores the skin's natural protective functions.

**Peptide concentration:** 5-ALA Acid and Vitamin C: 0.5% / Capacity: 500 ml.



**JeuDerm**